

ARTICLE 21

Open Space

[Amended July 19, 2016 per Ord. 2016-O-10, ZTA-2016-02]

[Amended June 5, 2018 per Ord 2018-O-06, ZTA-2018-02]

[Amended June 1, 2021 per Ord 2021-O10, ZTA-2021-02]

21.1 Purpose.

The open space standards contained herein are established to provide for the reservation of open spaces in both residential and non-residential developments located in the City of Creedmoor and its territorial jurisdiction. Preservation of open space in developing areas serves a variety of purposes, including meeting the recreational needs of residents, improving the aesthetic character of the community, reducing stormwater runoff, improving stormwater runoff water quality, and enhancing air quality. The standards set forth below establish regulations for open space in residential and non-residential developments.

21.2 Open Space.

Although open space can be agricultural or natural in character, open space is typically planned active play areas, greenways, or walking trails that are developed as part of a residential and/or non-residential development. The following standards are hereby established for open space, with the exception of the Main Street (MS) District, which shall be exempt from the requirements of this section.

21.2-1 OPEN SPACE LAND AREA REQUIREMENTS. Open space shall be provided in accordance with the following table for:

- A. initial residential development containing five or more units,
- B. redevelopment or additional development that adds five or more units,
- C. initial nonresidential or mixed use development greater than 0.6 acres, and
- D. redevelopment or additional development that adds 25 percent more nonresidential or mixed use floor area on a site that exceeds 0.6 acres within any 36 consecutive month period.

TABLE 21.1

ZONING DISTRICT	REQUIRED OPEN SPACE
All residential districts.	Single-family/and/or duplex subdivisions: 10% of total subdivision project site area. Other residential: 500 square feet of open space per unit or 9% of lot area, whichever is greater Nonresidential uses (e.g., religious institutions, schools, etc.): 6% of lot area.
All other districts, <i>excluding MS which is exempt from these requirements</i>	7.5% of lot area

21.2-2 LAND DESIGNATED AS FUTURE OPEN SPACE. Regardless of the requirements and exemptions of this subsection, any portion of the site of the proposed development that is designated as future open space or greenway in the *City Plan 2030 –Land Use and Comprehensive Master Plan* adopted by the City of Creedmoor, as amended from time to time, shall be reserved for open space. This area may be counted toward the total amount of open space required for the development.

If the total amount of land required proposed as future open space or greenway is less than the total amount of open space required for the development by the above table, then the developer shall provide additional open space to meet the requirement of the above table. If the amount of land designated as future open space or greenway exceeds the total amount of open space required by the above table, then the developer must still provide the open space designated in the official adopted plan.

21.2-3 MINIMUM OPEN SPACE AREA. Individual areas designated as open space areas shall not contain less

than 500 square feet.

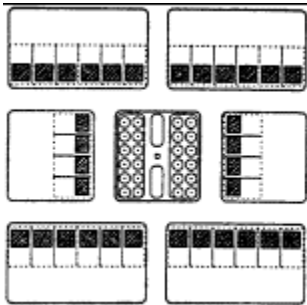
IMPROVEMENT OF OPEN SPACE. With the exception of Natural and Agricultural Open Space, open space shall be planned and improved, accessible and usable by persons living nearby. Improved shall mean cleared of underbrush and debris and shall contain landscaped areas designated for both active and passive recreational pursuits. At least 25% of the improved open space land shall be dedicated to active recreation purposes such as playgrounds, tennis courts, ball fields, volleyball courts, etc. The balance of the open space park area may be designed for passive recreation.

21.2-4 **DESIGN AND LOCATION.** In major subdivisions and multi-building developments in all zoning districts except Agricultural, open space shall be integrated into the design of the site. In subdivisions where 50% or more of the lots are less than 0.75 acre in size, open space shall be located within ¼ mile of at least 90% of the building lots, as measured along the rights-of-way of streets providing access between the two. In subdivisions where 50% or more of the lots are 0.75 acre or more in size, open space shall be located within ½ mile of at least 90% of the building lots, as measured along the rights-of-way of streets providing access between the two.

21.2-5 **FOCAL POINT.** Open space features should provide focal points for the neighborhood. A central square or green, for example, may comprise a majority of the open space. There should be a hierarchy of open space within new neighborhoods so that open space serves the needs of multiple age groups.

21.2-6 **TYPES OF OPEN SPACE.** Open space types include Squares, Parks, Forecourts, Plazas, Greenways, and Natural and Agricultural. Standards for these open space types are set forth below.

A. SQUARES



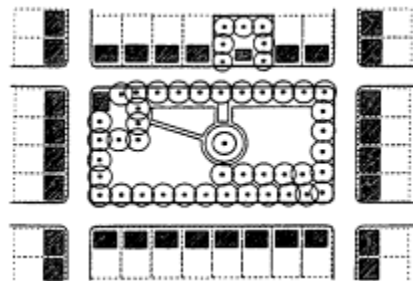
Squares are areas for passive recreational use. Squares shall be bounded by streets on a minimum of three sides or 75% of their perimeter.

Squares should be used in tight urban environments where residents have little yard space. Squares are used to bring a more natural landscape into an urban environment. As such, not more than 25% of a square should be impervious surface coverage. Hardscaping should be decorative (example brick pavers instead of asphalt for walkways).

Min size: 500 sq. feet

Max Size: 2 acres

B. PARKS



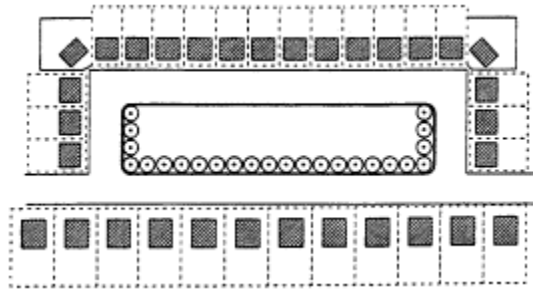
Parks are areas for passive or active recreational use. Parks should be bounded by streets on a minimum of two sides or 50% of their perimeter.

Minimum Size: 6,500 square feet

Maximum Size: 8 Acres. Maximum size may exceed eight acres if the park serves multiple neighborhoods or preserves environmental features.

Parks should be areas where passive and active recreation occur simultaneously (example: park benches for elderly and a tot-lot for young children), encouraging intergenerational interactions among park users.

C. FORECOURT

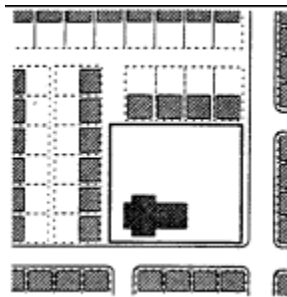


Forecourts are open spaces that act as buffers between residential buildings and streets or non-residential buildings. Forecourts are entirely bounded by buildings or streets. It is recommended that forecourts be planted parallel to all street right-of-ways.

Minimum Size: 500 sq. feet

Maximum Size: 1.5 acre

D. PLAZA

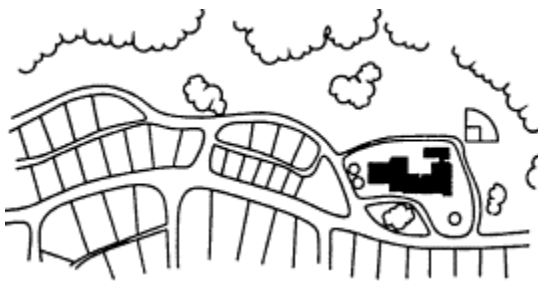


A plaza is an open area adjacent to a civic or commercial building. Plazas should be planted with deciduous trees to provide shade in the summer (example: the NC State Capital Building lawn in Raleigh, NC). Plazas function as gathering places and may incorporate a variety of non-permanent activities such as outdoor farmers markets or craft fairs. Limited parking is permissible on plazas. Plazas should match the architectural style of the buildings that they are adjacent to regarding materials and design. Plazas shall be level or gently sloping.

Minimum Size: none

Maximum Size: none

E. GREENWAYS



Greenways are spaces designed to incorporate natural settings such as creeks and significant stands of trees within a neighborhood. Greenways shall have streets or pedestrian ROWs parallel to or integrated into at least 75% of their length. Greenways are used for walking, jogging, biking, and they are used as wildlife corridors. Greenways may have infrequent small-scale active recreational facilities

such as playgrounds, although the majority of greenways shall be for passive, pedestrian and/or bicycle recreation.

F. NATURAL AND AGRICULTURAL OPEN SPACE



Natural and Agricultural Open Space preserves agricultural lands, environmentally sensitive areas, scenic views, cultural features, and rural character that would likely be lost through conventional development approaches. To accomplish this goal, the City of Creedmoor encourages creativity and allows for greater flexibility in the design of developments through use of the Mini-Farm Overlay District and conditional zoning districts (Article 8).

Natural and Agricultural Open Space shall be placed in preserves, which may adjoin housing areas that have been designed more compactly to create larger areas that may be enjoyed equally by all residents of the neighborhood.

- 21.2-7 OPEN SPACE OWNERSHIP AND CONSERVATION EASEMENT. Open space shall be owned or administered by one or a combination of the following methods: fee simple ownership by a private non-profit land conservancy; owned by a homeowners association; or by individual private ownership such as a farmer, developer or other private entity that maintains the open space (i.e. farming, equestrian facility, etc.)

All lands within areas required to be maintained as open space shall be protected by a permanent conservation easement, prohibiting further development, and setting other standards safeguarding the site's special resources from negative changes.

Public use of the open space may be limited to residents of the development, except for land used for public sidewalks and multi-use trails, provided that such open space is held in private or association ownership.

- 21.2-8 MAINTENANCE. The owner or lessee of the property designated as the open space shall be responsible for the maintenance of the open space area. Landscaped areas shall be maintained in good condition and the entire area shall be kept clear of debris. Failure to maintain the area shall constitute a violation of this ordinance and subject the violator to the penalty provisions of Article 23 if not corrected within 30 days of notification. Alternatively, if acceptable to the City, as applicable, the land may be dedicated to the City for public use and thereafter maintained by the City.

- 21.2-9 LAND ACCEPTABLE FOR OPEN SPACE DESIGNATION. The classes of land enumerated below may be utilized to meet the requirements of this section.

- A. Open water, wetlands, utility transmission right-of-ways, and undisturbed floodplains may account for up to twenty percent (20%) of the area requirement.
- B. Land used for public sidewalks significantly in excess of standard sidewalk requirements, streetscape and hardscape areas accessible to the public including sidewalk cafe areas, areas containing public art, and similar urban open space amenities.
- C. Land on which locally or nationally designated historic structures are located and determined to be contributing to the designation.
- D. Land which exceeds a 10 percent slope may be used to provide up to 50 percent (50%) of the required open space if existing slopes and vegetation so designated remain undisturbed.
- E. Land used for stormwater retention, provided such land is natural in appearance and is not separately fenced, may be used for up to ten percent (10%) of the required open space.
- F. Reserved.
- G. Land that is suitable for agriculture, land that has environmentally sensitive areas (ex. mature

trees), or land that has cultural significance (ex. important view such as a rural entrance into City).
21.2-10 LAND NOT ACCEPTABLE FOR OPEN SPACE DESIGNATION: The classes of land enumerated below shall not be utilized to meet the requirements of this section:

- A. Land that is contaminated with hazardous or toxic waste or materials as defined by state or federal regulations, with the exception of land covered by an approved mitigation plan and deemed acceptable to the City or land that is designated in an officially adopted Open Space or Greenway master plan.
- B. Land occupied by streets, drives, parking areas, required landscape buffers, or structures other than recreational structures.
- C. Land with a minimum width less than 24 feet unless part of a greenway system..
- D. Playgrounds and athletic fields that have not been maintained to adequate standards for safe and sanitary use.