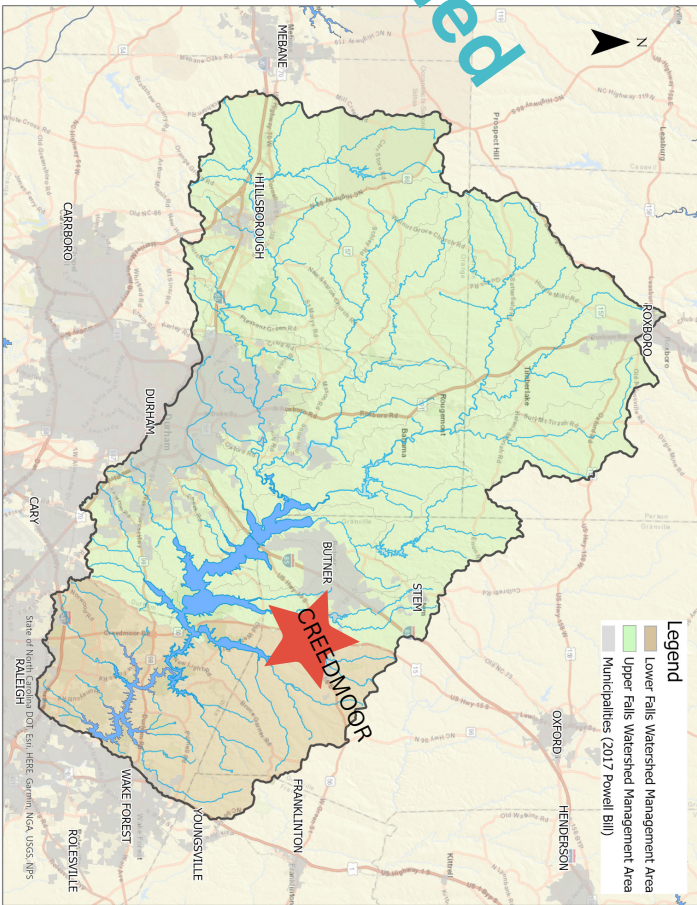


Falls Lake Watershed



WHO TO CONTACT

Contact Person During the Work Day:

- Code Enforcement Officer at 919-764-1060
- Community Development at 919-764-1058
- You can also email planning@cityofcreedmoor.org

At Night or During the Weekend:

- Contact the Creedmoor Police Department's non-emergency number at 919-528-1515.

Thank You

Community Development Office
211 North Main St., PO Box 765
Creedmoor, NC 27522

HELP PREVENT STORMWATER POLLUTION



Creedmoor
NORTH CAROLINA



ABOUT US

Creedmoor is nestled between Ledge Creek on the west connected to the city's Lake Rogers, and Robertson Creek whose tributaries Beaverdam & Cedar Creek form the eastern landscape of the city. The City of Creedmoor is entirely within the Falls Lake Watershed.

All the water that flows into these waterways ends up in Falls Lake which is part of the drinking water supply for the City of Raleigh and 6 surrounding communities.

During a rain event the dirt and pollutants that are picked up eventually end up in Falls Lake. These pollutants are often harmful to stream water quality and ecology.

Due to the City being entirely within the Falls Lake Watershed the City is subject to States Falls Lake Rules. Additionally, the City is a National Pollutant Discharge Elimination System (NPDES) Phase II Municipal Separate Storm Sewer System (MS4) permitted community and has been since 2012.

WHY IS THIS IMPORTANT?

As part of the City's NPDES Phase II MS4 permit, the City has the responsibility to identify and eliminate illicit discharges. Plus, it's in the Creedmoor Development Ordinance: Article 19!

South Granville Water and Sewer Authority (SGWASA) regulates oil and grease discharges.

Help us prevent pollutants from being washed downstream by reviewing the best management practices to help your business prevent illegal discharges.



BEST MANAGEMENT PRACTICES

CLEANING

- Never pour wash water outside on the ground, which can discharge into the storm drain system.
- Clean floor mats in an area that drains to sanitary sewer. Do not wash them out on the curb or area that drains to the storm drain system.
- Do not clean mobile food truck at place of residence.

GREASES & OILS

- Never pour grease into a sink, storm drain or dumpster.
 - Use a grease receptacle at your food service facility to dispose of the cooking fats, oils, and grease.
 - Inspect grease receptacle to ensure that its functioning properly. Have it professionally emptied to prevent overflows and unexpected cleanup costs.
- Visit commissary to dispose of fats, oils, and grease and to clean equipment.